

Tram network upgrade

Swanston and Victoria streets, Melbourne

July 2024

Update 1

Yarra Trams is working with the Department of Transport and Planning (DTP) and City of Melbourne (CoM) to upgrade the Swanston and Victoria streets precinct by creating open public space, and improving safety and operations.

Swanston and Victoria streets will have disruptions from Sunday 28 July, including full road closures from 10pm, Friday 30 August 2024.

	Early works	Major works
When	9pm to 5am, Sunday 28 July to Friday 30 August 2024 (Sunday to Thursday nights only) on: <ul style="list-style-type: none">– Swanston Street, south of Franklin Street to north of Victoria Street.– Victoria Street from Swanston Street to east of Elizabeth Street.– Elizabeth Street from Victoria Street to south of Queensberry Street.	10pm, Friday 30 August to 5am, Monday 16 September 2024 (24-hour works) on: <ul style="list-style-type: none">– Swanston Street between A'Beckett Street and north of Victoria Street.– Victoria Street between Elizabeth Street and Cardigan Street.
What's happening	<ul style="list-style-type: none">– Setting up site and traffic management.– Identifying underground services.– Installing new poles.– Installing site sheds.– Delivery and welding of rails.– Reinstating the site.	<ul style="list-style-type: none">– Setting up site and traffic management.– Delivery and welding of rails.– Excavating old and installing new tram tracks and road surface.– Power and pole renewal.– Road and line marking.– Reinstating the site.
What to expect	<ul style="list-style-type: none">– Nightly lane and intersection closures.– Mostly medium levels of noise during the night.– Vehicles, trucks, machinery and contractors on site.	<ul style="list-style-type: none">– 24-hour works.– Full kerb to kerb road closure and fencing.– Extremely high levels of noise.– Detours for bike riders, pedestrians and traffic.– Service changes to tram routes along Swanston and Elizabeth streets.



Early works



9pm to 5am, Sunday 28 July to Friday 30 August 2024 (Sunday to Thursday nights only)

- Setting up the work area including site offices and traffic management.
- Identifying underground utility services through non-destructive digging.
- Delivery/welding of rails.
- Installing new and removing old redundant poles.
- Setting up site sheds.

Road and parking



- Nightly road, lane, parking and bike lane closures on Swanston, Victoria and Elizabeth streets.
- Works will move along Swanston, Victoria and Elizabeth streets as the investigations progress.
- Nightly closure of the intersections of Victoria and Elizabeth and Victoria and Swanston streets, as required.
- Mostly low to medium levels of noise. Some periods of high levels of noise during the service investigation works.
- Vehicles, trucks, machinery and contractors on site.
- Access to properties will not be affected by the works.
- Footpaths will remain open, temporary detours may be in place at some times.
- Changes to bike lane and road layout to accommodate installation of new poles.
- Traffic management and signage will direct traffic. Please follow signage around works.

Public transport



No changes to tram services.

Pedestrians



Footpaths will be open. Temporary detours may be in place. Please follow signage around works.

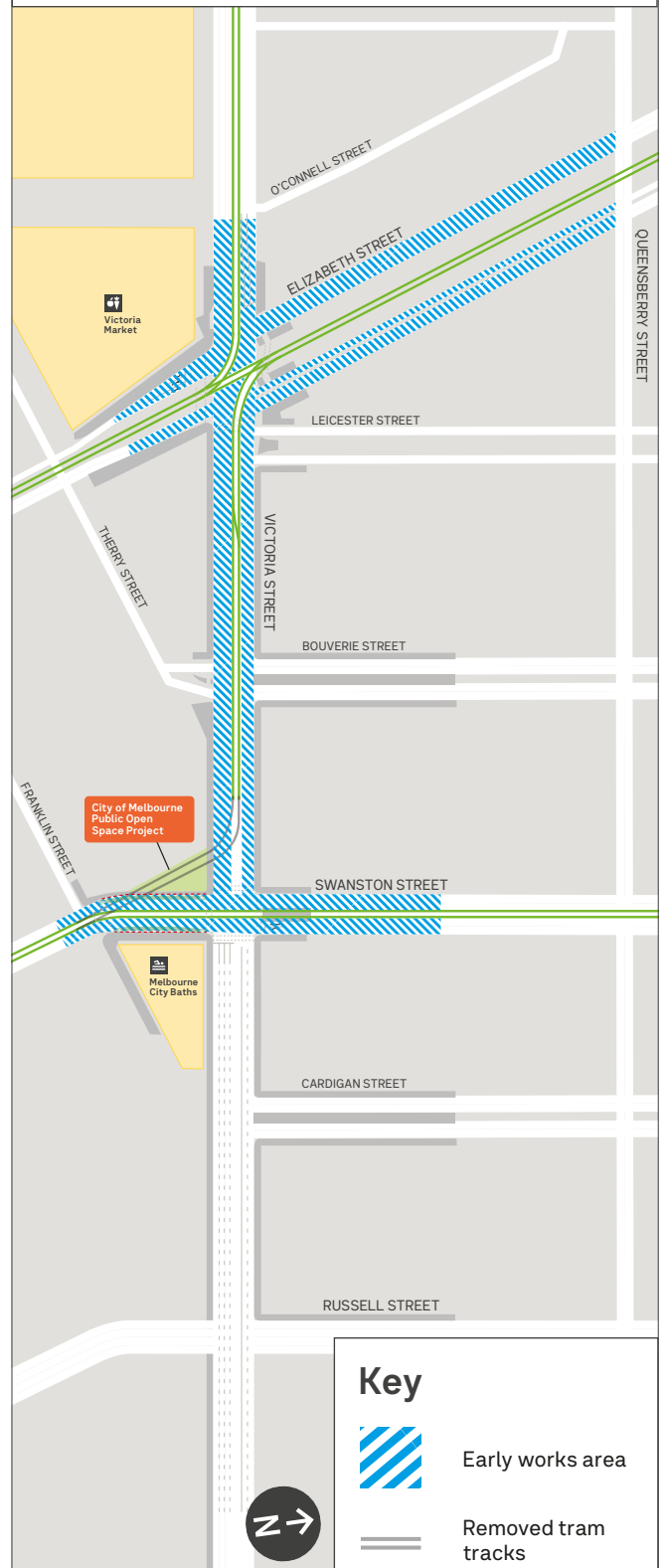
Noise and dust



Mostly low to medium levels of noise during the night.

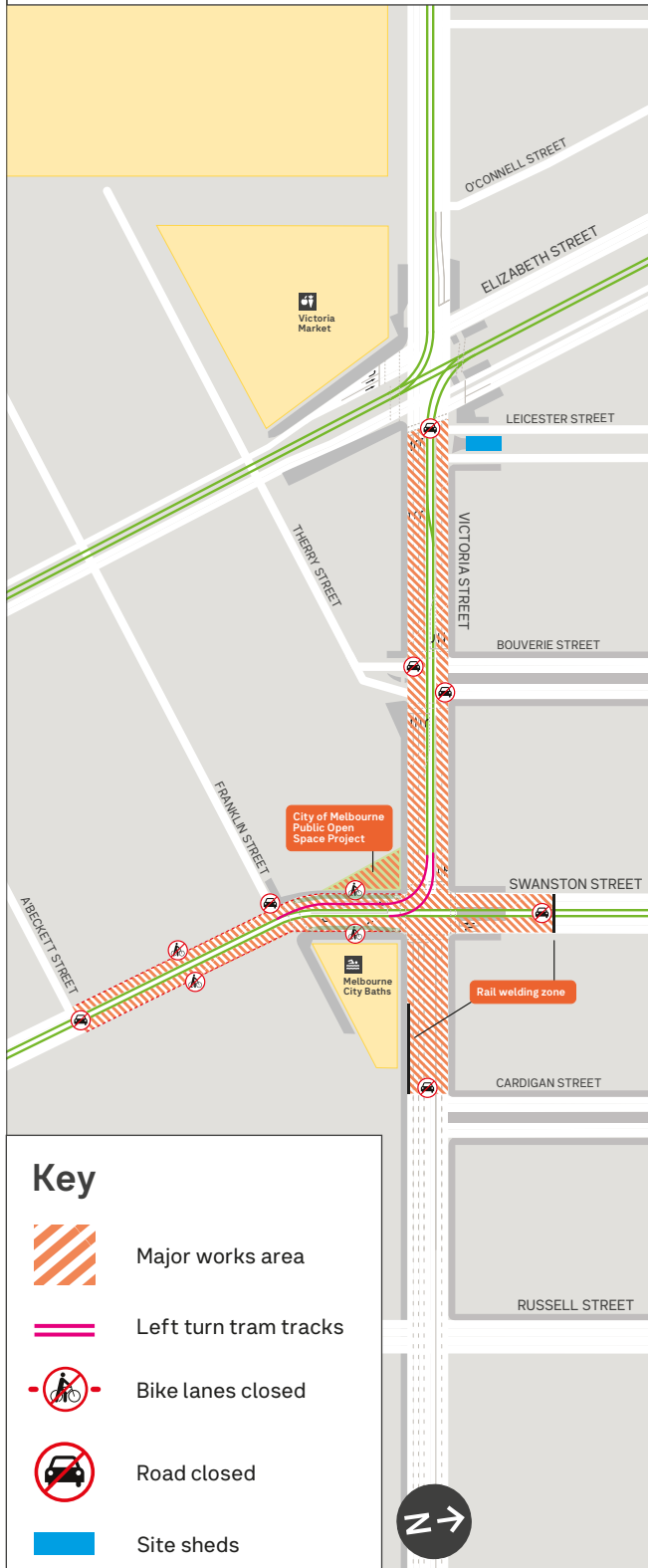
Early works: Night works

9pm to 5am, Sunday 28 July to Friday 30 August 2024 (Sunday to Thursday nights only)



Major works: 24-hour works

10pm, Friday 30 August to
5am, Monday 16 September 2024



Major works: 24-hour works



10pm, Friday 30 August to 5am, Monday 16 September 2024

- Setting up site and traffic management, including kerb to kerb fencing along all sections of the site.
- Delivery and welding of rails.
- Excavating old and installing new tram tracks and road surface.
- Removing the tram tracks from the triangle parcel along Swanston Street and creating open public space in the triangle parcel.
- Installing new left-turning tram tracks at the signalised intersection of Victoria and Swanston streets.
- Renewing tram power and poles.
- Installing tram separation kerbs in some sections of Victoria Street for safety.
- Removing existing car parking on Victoria Street. Providing short-term/loading parking in Leicester and Bouverie streets, and on south side of Victoria Street-west of Swanston Street.
- Reconfiguring Victoria Street traffic lanes to provide two eastbound and three westbound lanes.
- Installing, on the northbound side of Swanston Street, a continuous separated bike lane and footpath for increased pedestrian and bike rider safety.
- Install a no right turn from Swanston Street (northbound) into Victoria Street (eastbound).

Road and parking



- Swanston Street will be closed from A'Beckett Street to north of Victoria Street.
- Victoria Street will be closed from Elizabeth Street to Cardigan Street.
- Intersection of Therry, Bouverie and Victoria streets will be closed.
- Intersection of Elizabeth and Victoria streets will be open.
- **Emergency services will be allowed access.**

Public transport



There will be service changes to tram routes in Swanston Street.

Visit: yartratams.com.au/service-changes

For more information about the project visit yartratams.com.au/projects or call 1800 800 007.

Authorised by the Department of Transport and Planning, 1 Spring Street, Melbourne.

Major works continued

Pedestrians



Footpaths will remain open during the works.

Noise and dust



Construction will occur 24-hours a day.

Noise and dust are unavoidable, but we will work to minimise this as much as possible and complete the noisiest works between 6am and 10pm.

Extremely high levels of noise are expected during the first week of the works while the tracks are dug out and rubble removed. For the rest of the works there will be short periods of high level noise.

Open for business



Businesses located around the works area will remain open during the works. Please continue to support your local businesses during these essential infrastructure works. Pedestrian access to these businesses will remain open at all times.

About the project

Yarra Trams is working with the Department of Transport and Planning (DTP) and City of Melbourne (CoM) to upgrade the Victoria and Swanston streets precinct by creating open public space, and improving safety and operations.

The project includes:

- Tram track upgrades
- Realigning traffic lanes
- Parking changes to maintain capacity and traffic flow
- Removal of existing tram tracks from the triangle parcel of road opposite Melbourne City Baths to create more open space.

The final traffic, transport and parking arrangements after the works are complete are shown in the map below.

There will be a second stage of this project that will occur at the intersection of Victoria and Elizabeth streets. Dates to be confirmed.

To find out more:



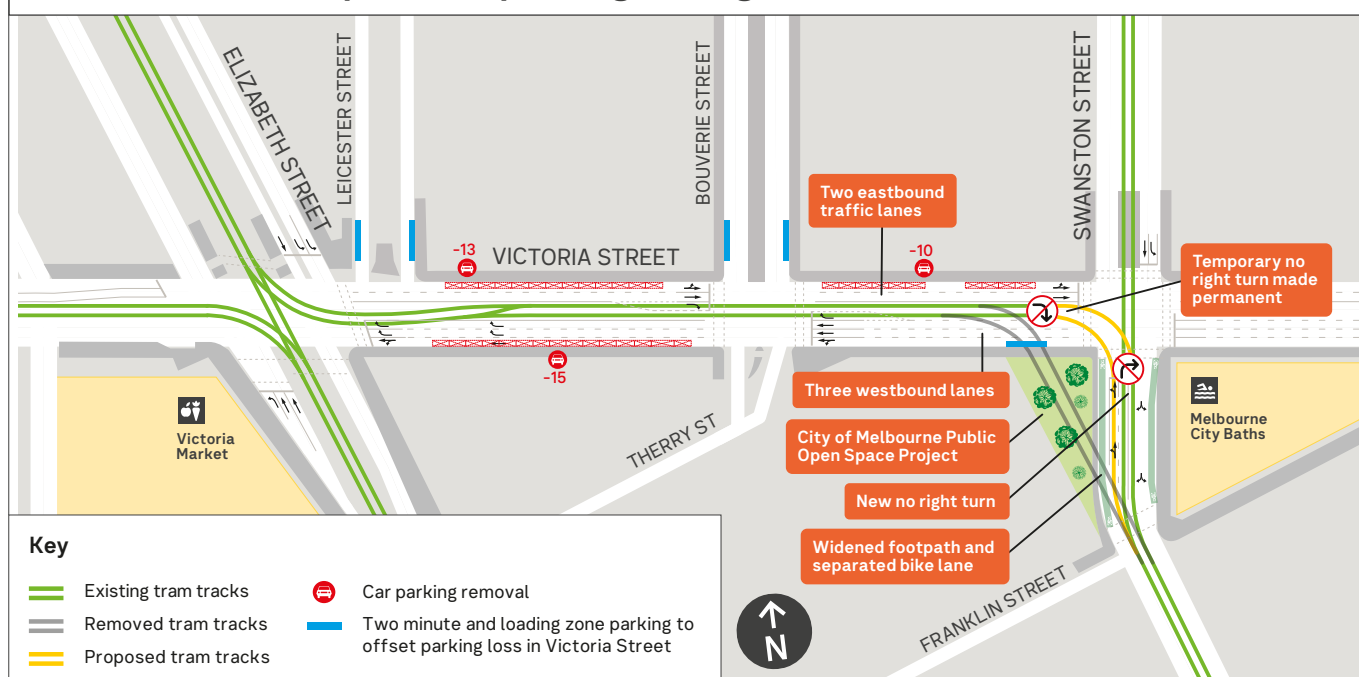
yarratrams.com.au/projects



projects-comm@yarratrams.com.au

For more information about City of Melbourne's Public Open Space Project contact City of Melbourne via: Phone: 9658 9658 or melbourne.vic.gov.au

Final traffic, transport and parking arrangements after the works



For more information about the project visit yarratrams.com.au/projects or call 1800 800 007.

Authorised by the Department of Transport and Planning, 1 Spring Street, Melbourne.